

Report: Delayed Transfers of Care Data

Purpose of report

1. To present the latest data with respect to Delayed Transfers of Care.

Definition

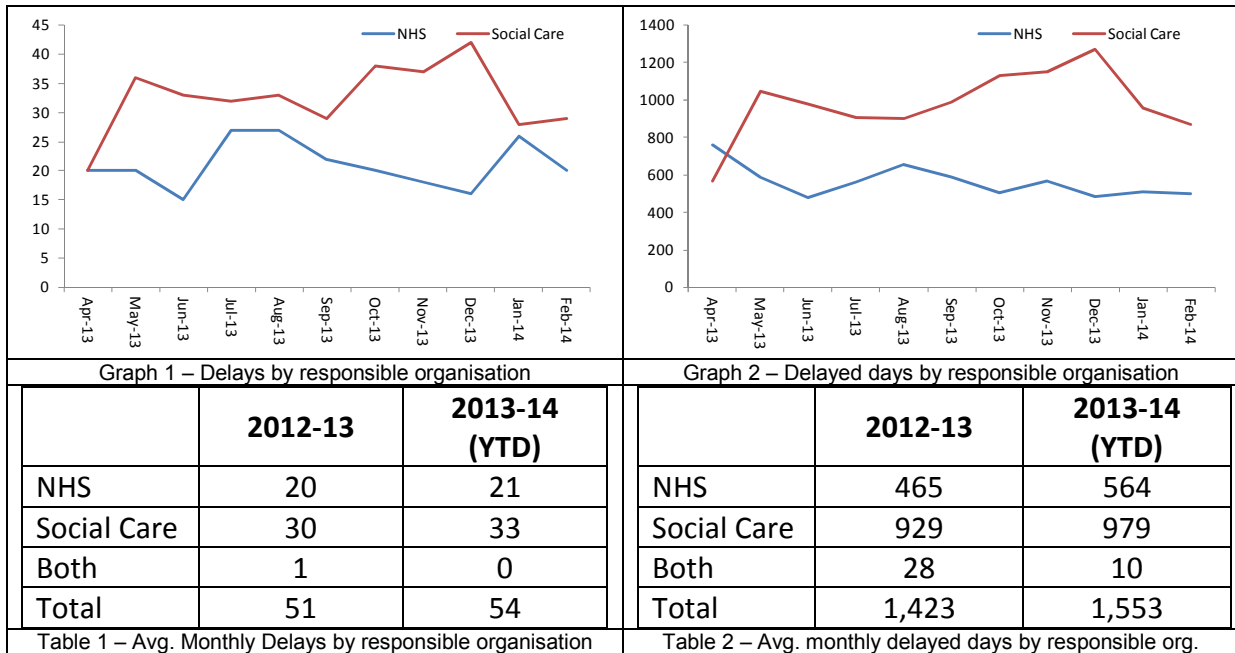
2. A delayed transfer of care from acute or non-acute (including community and mental health) care occurs when a patient is ready to depart from such care and is still occupying a bed. A patient is ready for transfer when:
 - a – A clinical decision has been made that patient is ready for transfer AND
 - b – A multi-disciplinary team decision has been made that patient is ready for transfer AND
 - c – The patient is safe to discharge/transfer.
3. A multi-disciplinary team in this context includes nursing and other health and social care professionals, caring for that patient in an acute setting.
4. For patients of no fixed abode, the council responsible for the patient is the council whose area they reside. This is irrespective of whether the patient lives on the street or in a hostel.
5. Asylum seekers and others from overseas should be listed under the council in which they currently reside. It is the responsibility of this council to decide whether they are eligible for social services.

Background

6. Delayed Transfers of Care are seen by the Department of Health as, one of a number of markers of the effective joint working of local partners, and of the effectiveness of the interface between health and social care services.
7. There are 2 measures of Delayed Transfers:
 - a. The Adult Social Care Outcomes Framework uses the number of people whose discharge has been delayed occupying a bed at midnight on the last Thursday of a month.
 - b. The Better Care Fund Indicator uses the total number of delayed days.
8. The official statistics are collected by NHS England from all acute trusts in England and reported monthly with around a month's delay to allow for collation.
9. NHS Wiltshire CCG collects the data weekly, there is some inconsistency between the weekly data and the official statistics but this is within expected limits.

Analysis of NHS England Statistics

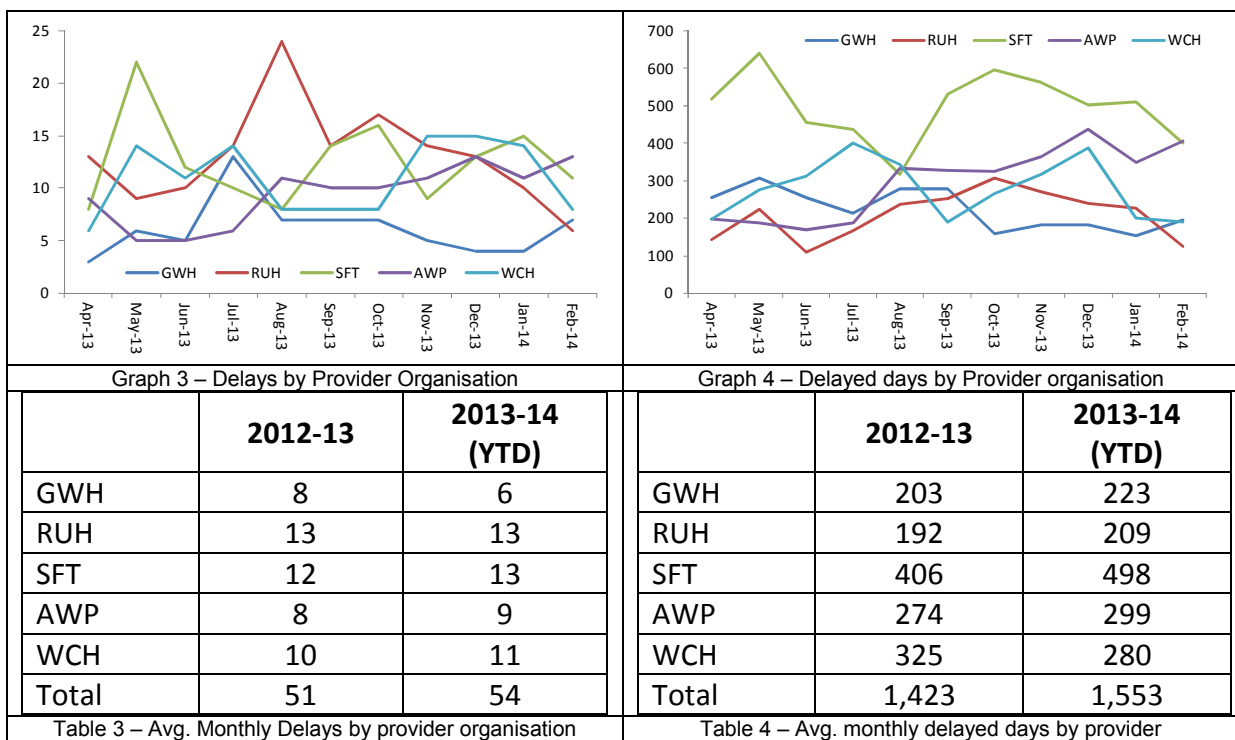
10. The data from NHS England provides allows for a comprehensive analysis of delayed transfers of care. The charts below show the trends for Wiltshire.



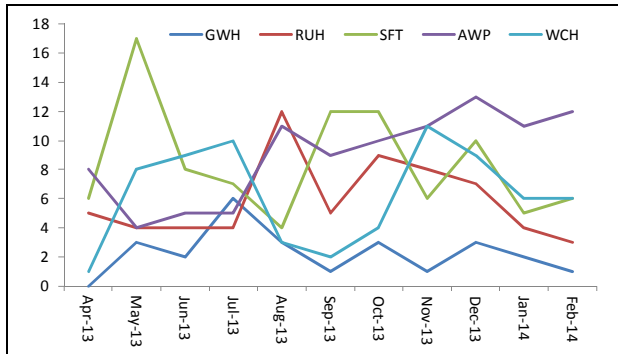
11. The number of people delayed in 2013-14 as measured on the last Thursday of the month has increased slightly (5.6%) when compared to 2012-13. The number of delayed days has increased more substantially (9.1%) when similarly compared.

12. Delayed Days for health reasons (21.3%) have increased more rapidly than Social Care Delays (5.4%).

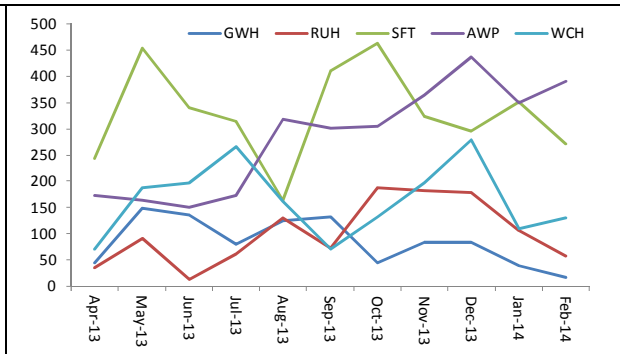
13. The charts below show the trends for the main providers for all delayed transfers. These 5 providers account for around 98% of the delayed transfers of care for Wiltshire patients.



14. Most of the providers show a marginal increase in the number of people delayed on the last Thursday of the month. With the exception of Wiltshire Community Hospitals all providers are showing an increase in the number of delayed days. By far the biggest increase is at Salisbury Foundation Trust (22.6%).
15. Social Care Delays account for around three fifths of all delayed transfers of care. The charts below show the trends for delays where social care is the responsible organisation for the main providers.



Graph 5 – Social Care delays by Provider organisation



Graph 6 – Social Care delayed days by Provider organisation

	2012-13	2013-14 (YTD)
GWH	2	2
RUH	6	6
SFT	8	9
AWP	7	9
WCH	6	6
Total	30	33

Table 5 – Avg. Monthly Delays by responsible organisation

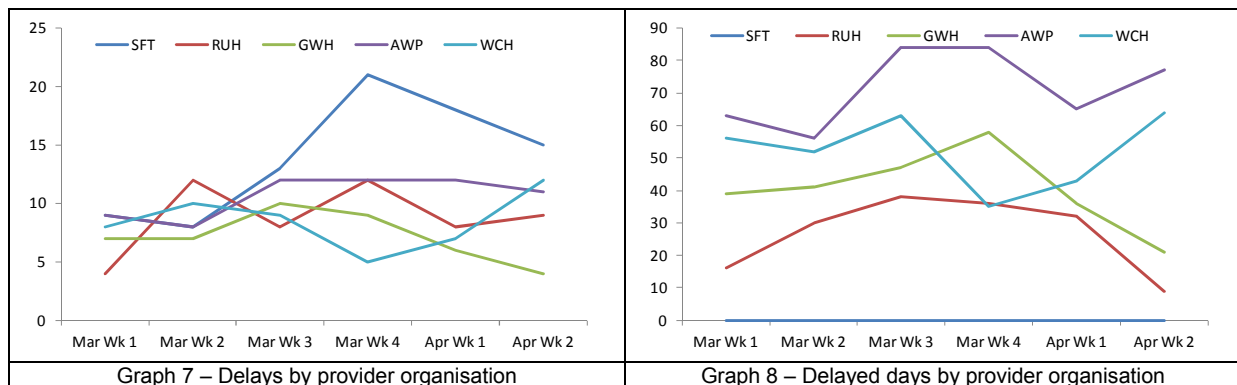
	2012-13	2013-14 (YTD)
GWH	85	85
RUH	111	102
SFT	270	330
AWP	234	284
WCH	216	164
Total	929	979

Table 6 – Avg. monthly delayed days by responsible org.

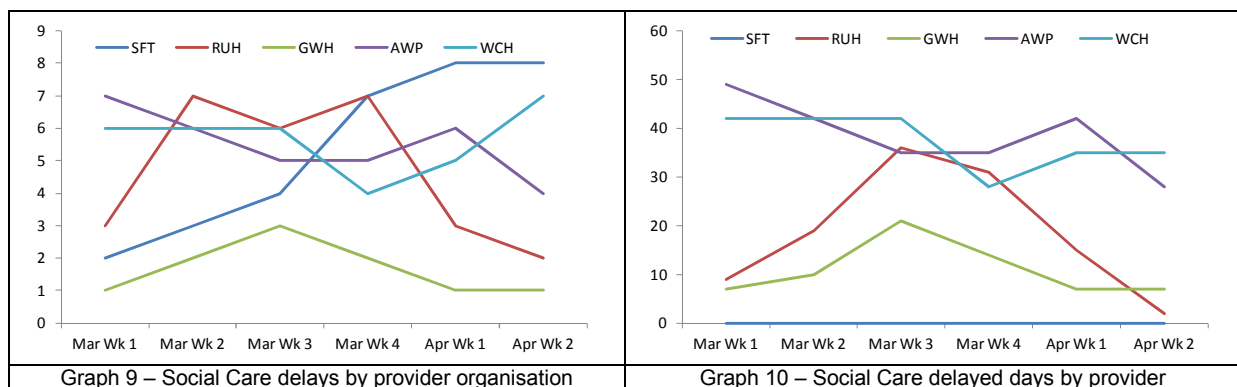
16. Most of the providers show a marginal increase in the number of people delayed on the last Thursday of the month. RUH and Wiltshire Community Hospitals have seen a reduction in the number of social care delayed days while Great Western has seen no change. There are large increases at both Salisbury Foundation Trust (22.2%) and Avon and Wiltshire Partnership (21.4%).
17. The underlying data for each of the charts is showing in Appendix 1.

Analysis of CCG Weekly Data

18. The weekly data is collated by NHS Wiltshire CCG to inform their weekly performance report which is published with around a week's delay. The weekly data is only provisional as there are a number of potential areas of discrepancy between the weekly data and the monthly official statistics:
- There may be ongoing discussions between the CCG or ASC and the Providers about the classification of a particular patient/s.
 - Weeks do not naturally fit into whole months so in some months there will be duplication of a couple of days.
 - Salisbury Foundation Trust stopped reporting delayed days weekly during 2013-14, despite repeated requests by the CCG have not restarted.
19. The charts show the weekly position for March and April for all delayed transfers of care:

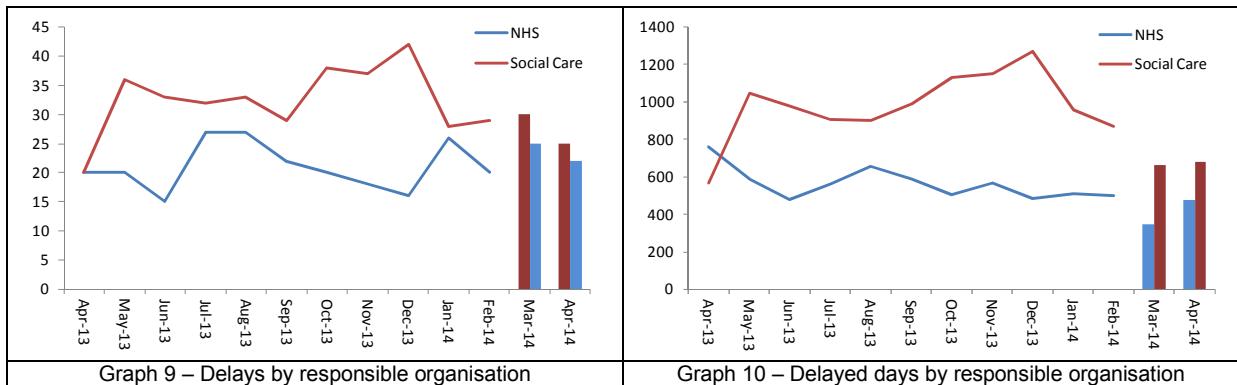


20. For the last week the RUH data for delayed patients and days are the same which is likely to change.
21. With the exception of SFT the number of delays seems to fairly consistent, however SFT has seen a big increase. The delayed days for the trusts which report show a general downward trend with the exception of WCH and AWP.
22. The charts show the weekly position for March and April for social care delayed transfers of care:



23. This shows a more stable picture than the overall delayed transfers of care with the number of delays broadly flat. The number of delayed days seems to show a slight decreasing trend.

24. The weekly data provides a good indication of the likely final monthly official figures. Using simple projection techniques the charts below show an update of those seen earlier with the Wiltshire monthly position.

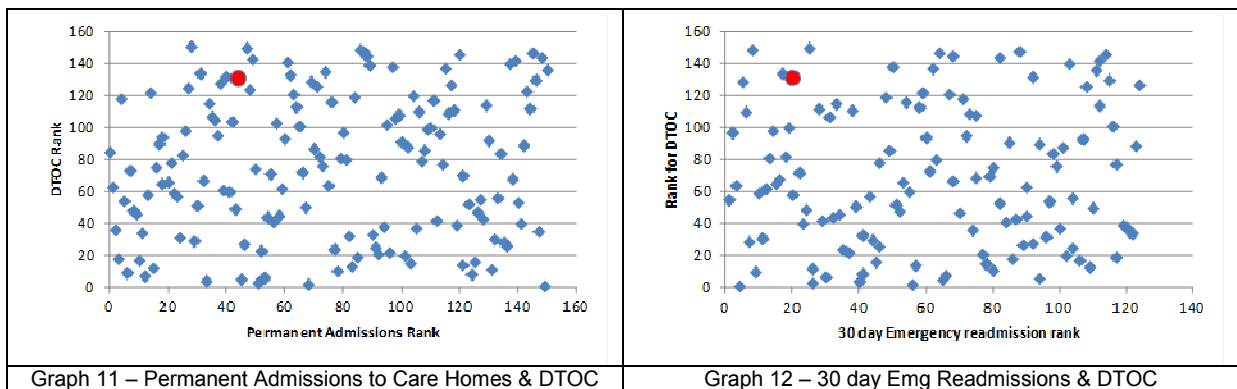


25. The number of delays seems to increase slightly in March but may fall again in April. The delayed days seem to show a continued reduction. This is likely to be caused by the lack of delayed days from SFT and the projection methods used.

26. The underlying data for each of the charts is showing in Appendix 1.

Analysis of relationship with other indicators

Indicators such as Permanent admissions to care homes and 30 day emergency readmissions are other indicators of the effective joint working between health and social care. Analysis of the rank of Wiltshire Council for DTOC and other indicators is shown in the following graphs.



The performance of Wiltshire Council is within the Top quartile nationally for both these indicators while our DTOC position is in the bottom quartile. The initiatives being undertaken to reduce delayed transfers are designed to ensure this good performance is not adversely impacted.

CIlr Keith Humphries (lead)

Report Author: Jeremy Hooper, Interim Public Health Scientist
 01225 716699 jeremy.hooper@wiltshire.gov.uk

APPENDIX 1 – Data Tables

27. The following tables show the data for the charts presented above:

	Apr	May	Jun	Jul	Aug	Sep	Oct	Nov	Dec	Jan	Feb
NHS	20	20	15	27	27	22	20	18	16	26	20
SC	20	36	33	32	33	29	38	37	42	28	29
Both	2	0	0	0	0	2	0	0	0	0	0
All	42	56	48	59	60	53	58	55	58	54	49

Number of delays on last Thursday of the month by responsible organisation

	Apr	May	Jun	Jul	Aug	Sep	Oct	Nov	Dec	Jan	Feb
NHS	760	590	481	561	655	591	505	565	486	508	501
SC	568	1,045	979	908	902	988	1,131	1,152	1,272	958	867
Both	41	0	0	5	8	28	21	2	0	0	0
All	1,369	1,635	1,460	1,474	1,565	1,607	1,657	1,719	1,758	1,466	1,368

Number of delayed days for the Month by responsible organisation

	Apr	May	Jun	Jul	Aug	Sep	Oct	Nov	Dec	Jan	Feb
GWH	3	6	5	13	7	7	7	5	4	4	7
RUH	13	9	10	14	24	14	17	14	13	10	6
SFT	8	22	12	10	8	14	16	9	13	15	11
AWP	9	5	5	6	11	10	10	11	13	11	13
WCH	6	14	11	14	8	8	8	15	15	14	8
Others	3	0	5	2	2	0	0	1	0	0	4

Number of delays on last Thursday of the month by provider

	Apr	May	Jun	Jul	Aug	Sep	Oct	Nov	Dec	Jan	Feb
GWH	254	306	256	213	278	278	159	182	182	153	196
RUH	144	224	109	168	236	252	306	272	240	227	126
SFT	518	641	456	437	317	531	597	563	503	510	400
AWP	199	187	169	188	334	327	326	365	437	350	406
WCH	198	277	312	400	343	189	266	317	388	200	191
Others	56	0	158	68	57	30	3	20	8	26	49

Number of delayed days for the Month by provider

	Apr	May	Jun	Jul	Aug	Sep	Oct	Nov	Dec	Jan	Feb
GWH	0	3	2	6	3	1	3	1	3	2	1
RUH	5	4	4	4	12	5	9	8	7	4	3
SFT	6	17	8	7	4	12	12	6	10	5	6
AWP	8	4	5	5	11	9	10	11	13	11	12
WCH	1	8	9	10	3	2	4	11	9	6	6
Others	0	0	5	0	0	0	0	0	0	0	1

Number of social care delays on last Thursday of the month by provider

	Apr	May	Jun	Jul	Aug	Sep	Oct	Nov	Dec	Jan	Feb
GWH	45	149	135	81	124	132	44	84	83	40	16
RUH	36	91	13	61	130	73	188	183	178	107	57
SFT	243	454	340	314	163	411	462	323	296	352	271
AWP	173	163	151	173	317	302	304	365	437	350	391
WCH	71	188	198	265	161	70	133	197	278	109	130
Others	0	0	142	14	7	0	0	0	0	0	2

Number of social care delayed days for the Month by provider

	06/03/2014	13/03/2014	20/03/2014	27/03/2014	03/04/2014	10/04/2014
GWH	7	7	10	9	6	4
RUH	4	12	8	12	8	9
SFT	9	8	12	21	18	15
AWP	9	8	12	12	12	11
WCH	8	10	9	5	7	12

Number of delays for the week by provider

	06/03/2014	13/03/2014	20/03/2014	27/03/2014	03/04/2014	10/04/2014
GWH	39	41	47	58	36	21
RUH	16	30	38	36	32	32
SFT						
AWP	63	56	84	84	65	77
WCH	56	52	63	35	43	64

Number of delayed days for the week by provider

	06/03/2014	13/03/2014	20/03/2014	27/03/2014	03/04/2014	10/04/2014
GWH	1	2	3	2	1	1
RUH	3	7	6	7	3	2
SFT	2	3	4	7	8	8
AWP	7	6	5	5	6	4
WCH	6	6	6	4	5	7

Number of social care delays for the week by provider

	06/03/2014	13/03/2014	20/03/2014	27/03/2014	03/04/2014	10/04/2014
GWH	7	10	21	14	7	7
RUH	9	19	36	31	15	2
SFT						
AWP	49	42	35	35	42	28
WCH	42	42	42	28	35	35

Number of social care delayed days for the week by provider

	Mar – Based on Weekly	April – Projection based on 2 weeks
NHS	30	25
SC	25	22
Both	4	4
All	59	51

Estimated number of delays on last Thursday of the month by responsible organisation

	Mar – Based on Weekly	April – Projection based on 2 weeks
NHS	347	477
SC	666	680
Both	49	60
All	1062	1217

Number of delayed days for the Month by responsible organisation